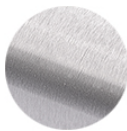
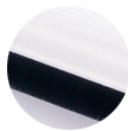


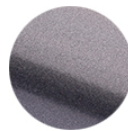
AVAILABLE FINISHES



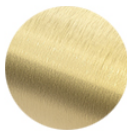
BRUSHED
STAINLESS



POLISHED
STAINLESS



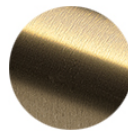
GUNMETAL
GREY



BRUSHED
BRASS



POLISHED
BRASS



ANTIQUÉ
BRASS



SUNSET
COPPER



OIL RUBBED
BRONZE



MATTE
BLACK

CUSTOM COLORS ARE AVAILABLE BY REQUEST

DIMENSIONS

(W ₁)	WIDTH 1	2.54"
(W ₂)	WIDTH 2	2.54"
(D ₁)	DIAMETER 1	2.00"
(D ₂)	DIAMETER 2	1.90"

INSTALLATION

1. Completely secure the first section of bar rail tubing to the bar face or wall.
2. Insert elbow fitting into the end of the secured section of tubing.
3. Connect the second piece of tubing to the elbow fitting before securing to bar.
4. Secure the second section of bar rail tubing to bar face.

Care and maintenance of bar foot rail varies by finish. Given the nature of the product, typical wear and tear may be noticed with your bar rail over time, such as scuffs, scratches, and dirt. Visit kegworks.com/bar-rail-care to read our guide on how to properly prep, clean & maintain all bar rail finishes.